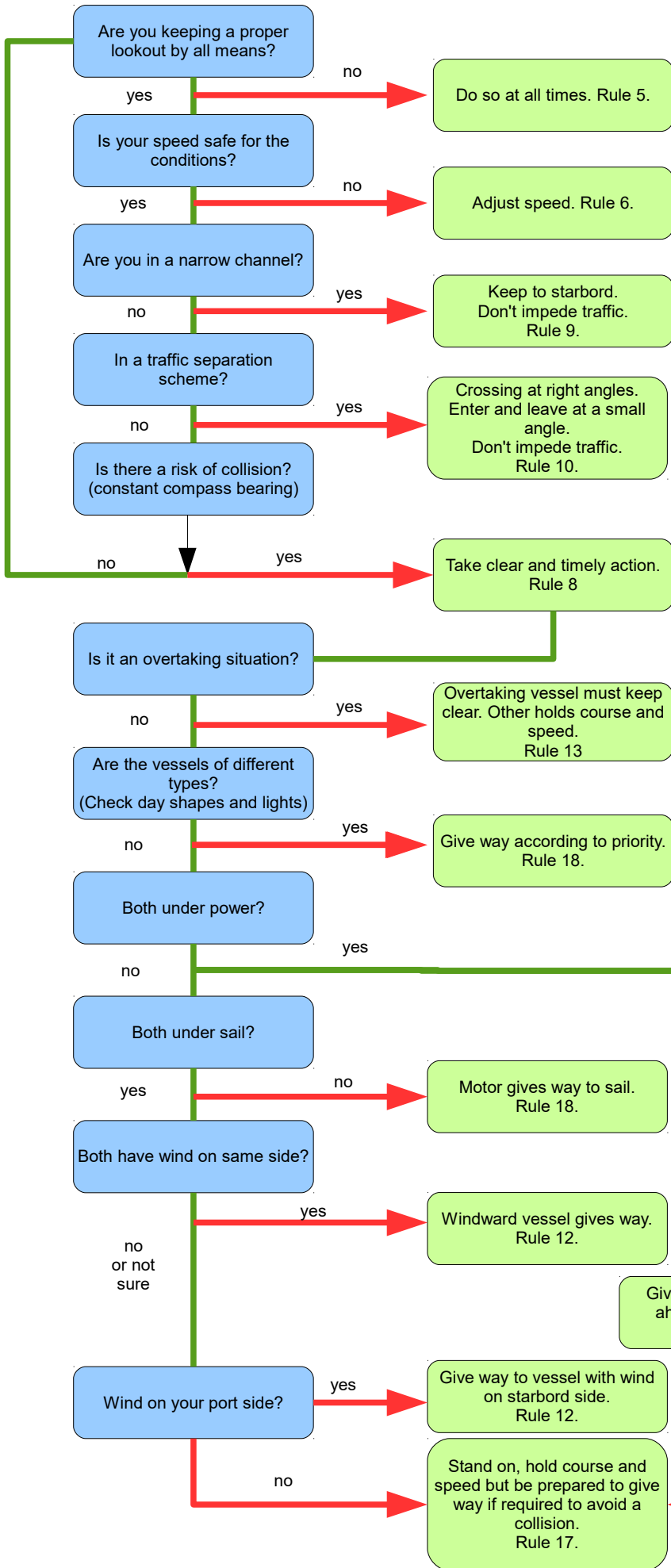




OCEAN WIND

Colregs quick application guide



Application of the Colregs for vessels within sight of one another. See Rule 19 concerning vessels in restricted visibility. All vessel should proceed at minimum safe speed required for steerage and be prepared to manoeuvre or stop immediately.

The blue fields are a yes/no decision that needs to be made.

The green fields are an action that needs to be taken based on a yes/no decision.

The red arrows signify a call to some action.

The green connections lead to the next decision to be taken.